



Assembly Instructions

Printer Wallaby

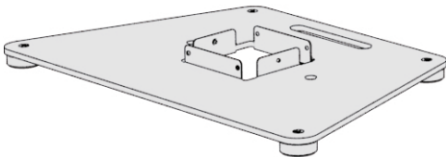
Revision A
P/N E234564

Printer Wallaby-Floor

Box Contents



Floor-Head Assembly
Qty. 1



Floor Base
Qty. 1



M4x8, PAN-HEAD, SCREW
Qty. 4, Bag A
(for Android 15.6" or 21.5")



M4x12, PAN-HEAD, SCREW
Qty. 4, Bag B
(for Windows 21.5")



M4x17, PAN-HEAD, SCREW
Qty. 4, Bag I
(for Windows 15.6")



M5x12, PAN-HEAD, SCREW
Qty. 6, Bag E

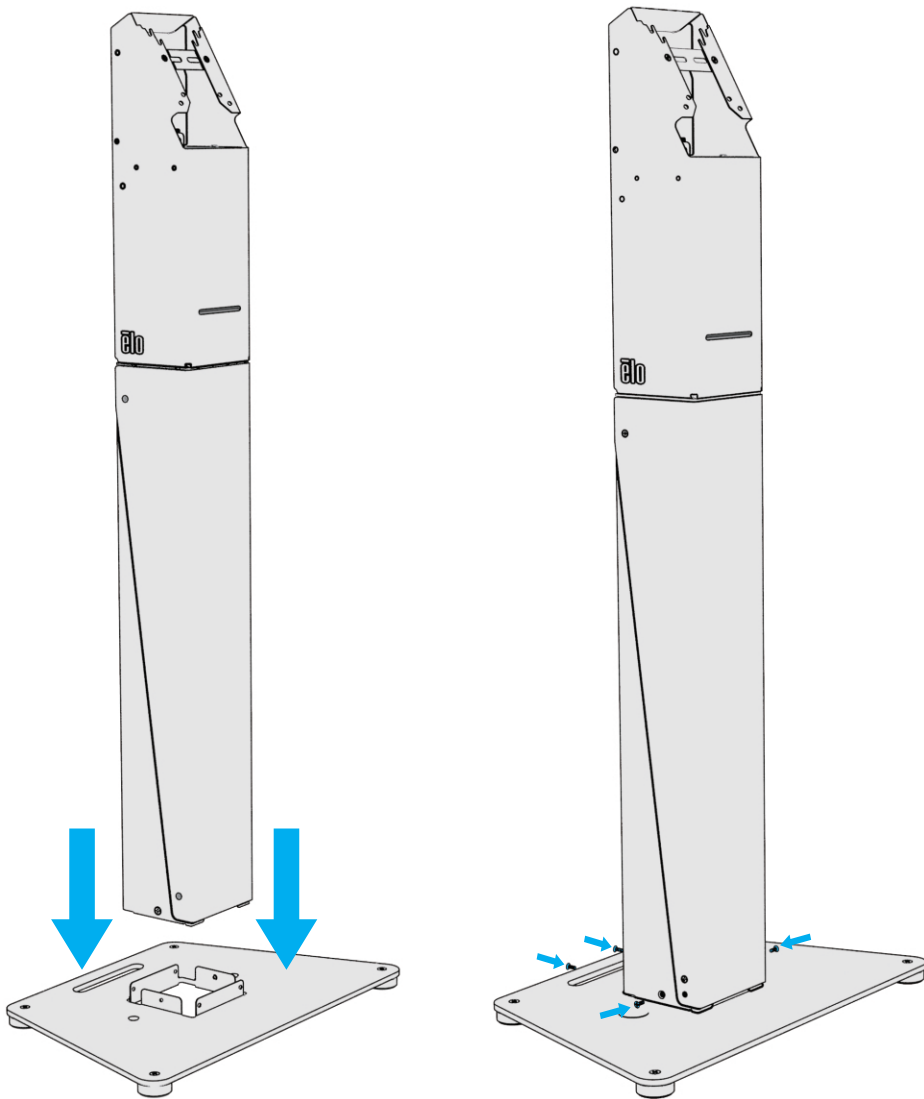


Printing paper roller
Qty. 1, Bag H

installation

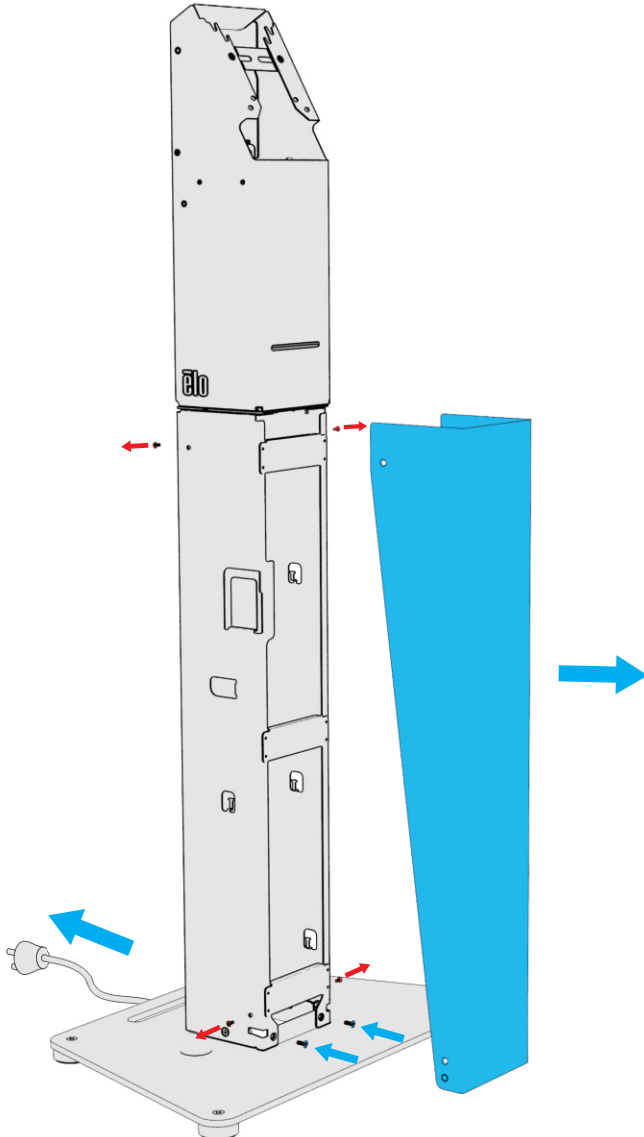
STEP 1:

Assemble tower to base plate using (4) screws from bag "E".



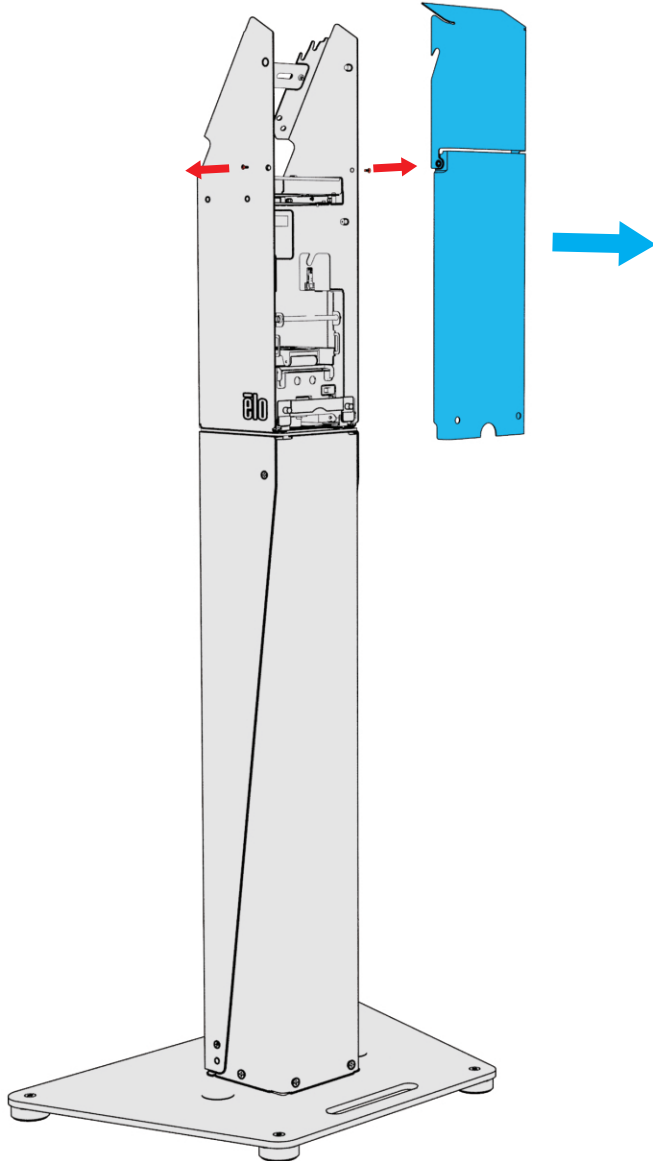
STEP 2:

Remove and save the (4) screws on the left and right of the stand front cover. Pull off the silver cover and set aside. Add (2) remaining screws from bag "C" to bottom front of stand. Take the power cable head in the cylinder out of the hole at the bottom of base. Then restore the front cover.



STEP 3:

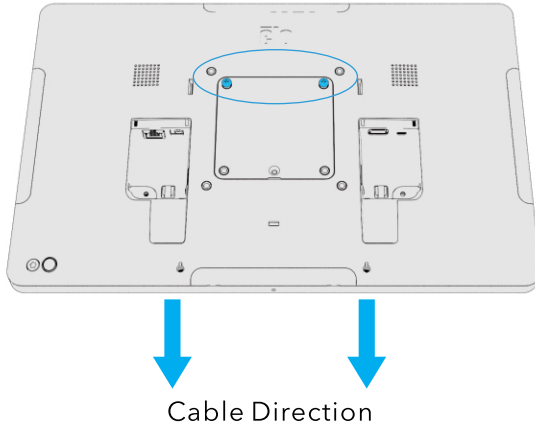
Remove and save the (2) screws on the left and right of the stand back cover. Pull off the back cover and set aside.



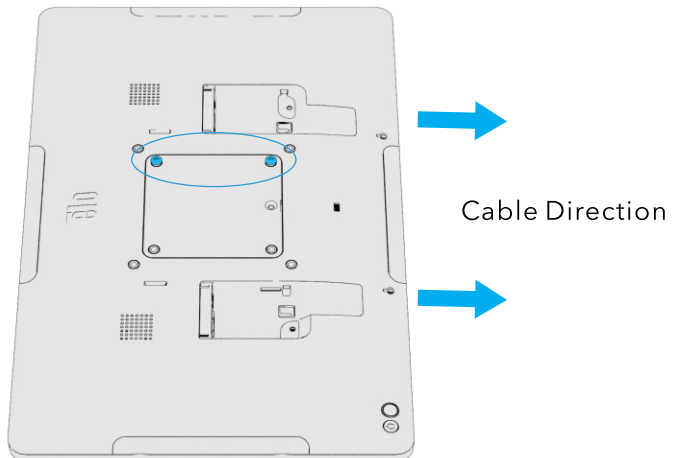
STEP 4-1:

For Android 15", Assemble(2)M4x8 pan head screws from bag "A" to I-Series upper 75mm VESA mounting holes, leaving approximately 1/8"(3mm)gap under screw head.

Android 15" Landscape



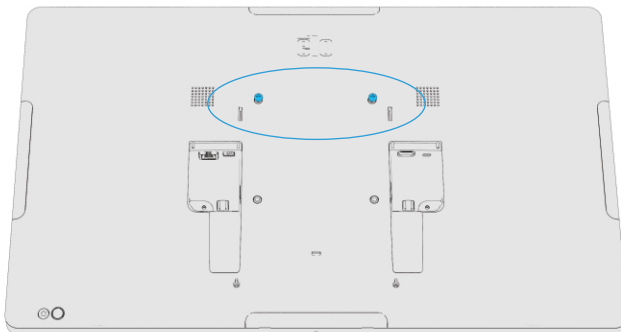
Android 15" Portrait



STEP 4-2:

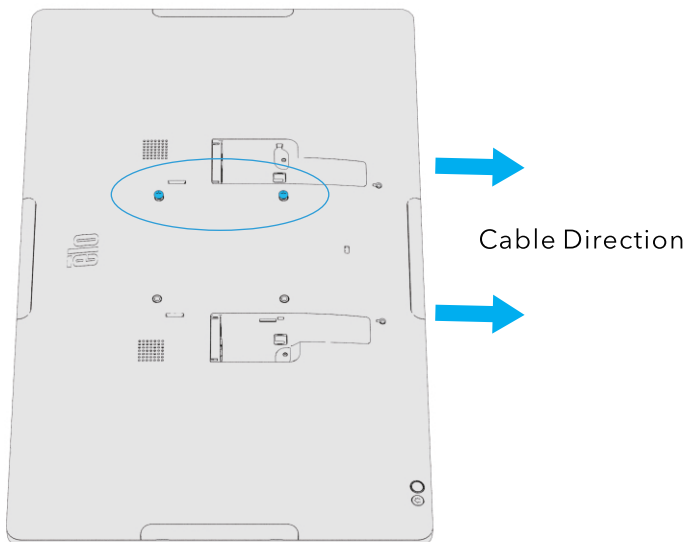
For Android 22", Assemble(2)M4x8 pan head screws from bag "A" to I-Series upper 100mm VESA mounting holes, leaving approximately 1/8"(3mm)gap under screw head.

Android 22" Landscape



Cable Direction

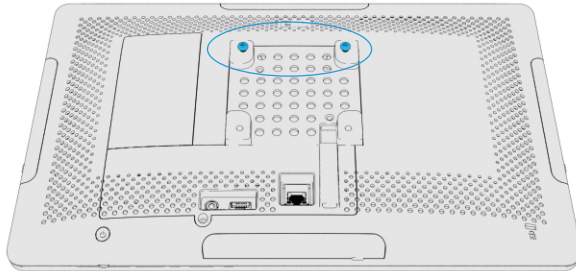
Android 22" Portrait



STEP 4-3:

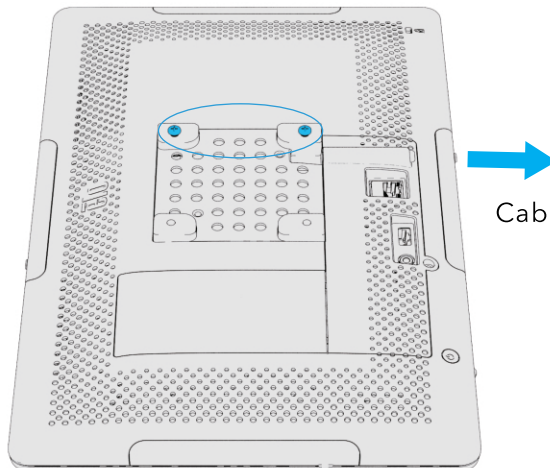
For Windows 15", Assemble (2) M4x17 pan head screws from bag "1" to I-Series upper 75mm VESA mounting holes, leaving approximately 1/8" (3mm) gap under screw head.

Windows 15" Landscape



Cable Direction

Windows 15" Portrait

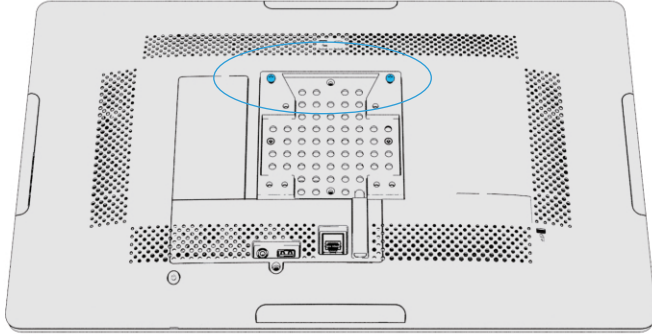


Cable Direction

STEP 4-4:

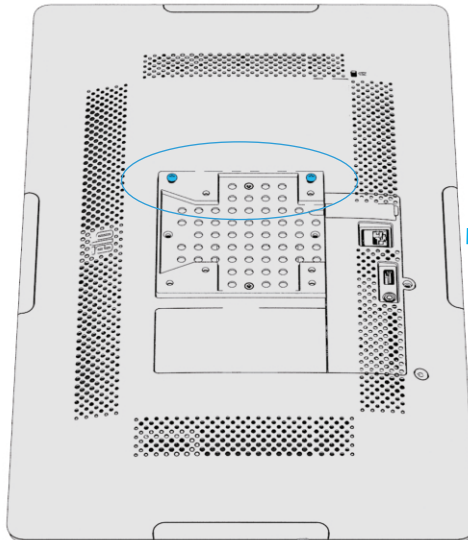
For Windows 22", Assemble (2) M4x12 pan head screws from bag "B" to I-Series upper 100mm VESA mounting holes, leaving approximately 1/8" (3mm) gap under screw head.

Windows 22" Landscape



Cable Direction

Windows 22" Portrait

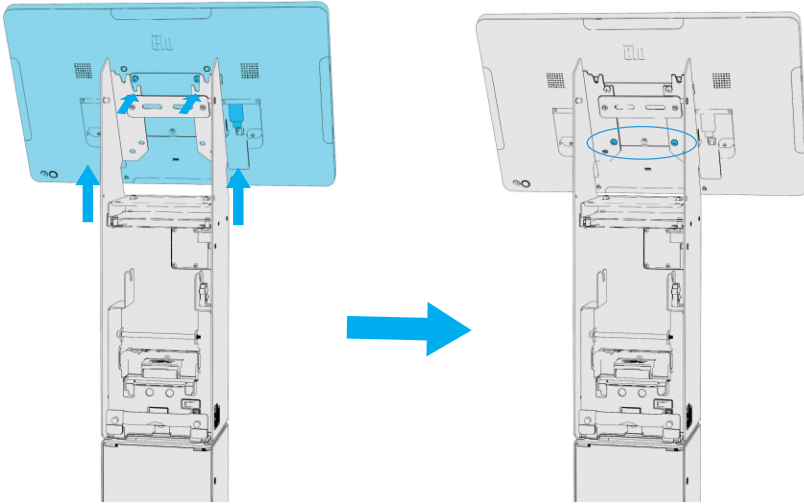


Cable Direction

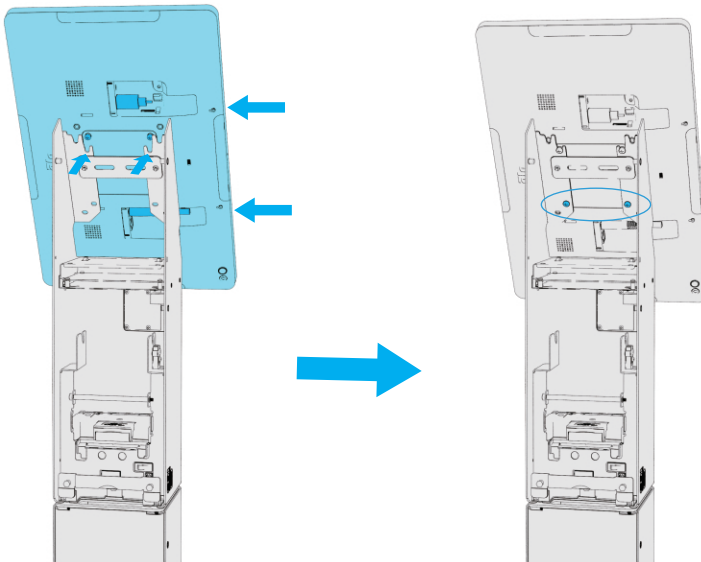
STEP 5-1:

For Android 15", connect DC cable and USB cable. Next, assemble I-Series to front cover using keyholes and attach remaining(2) screws from bag "A" to lower 75mm VESA mounting holes. Tighten upper VESA screws, VESA screws to be tightened to max 12 in-lb (1.4N-m).

Android 15" Landscape



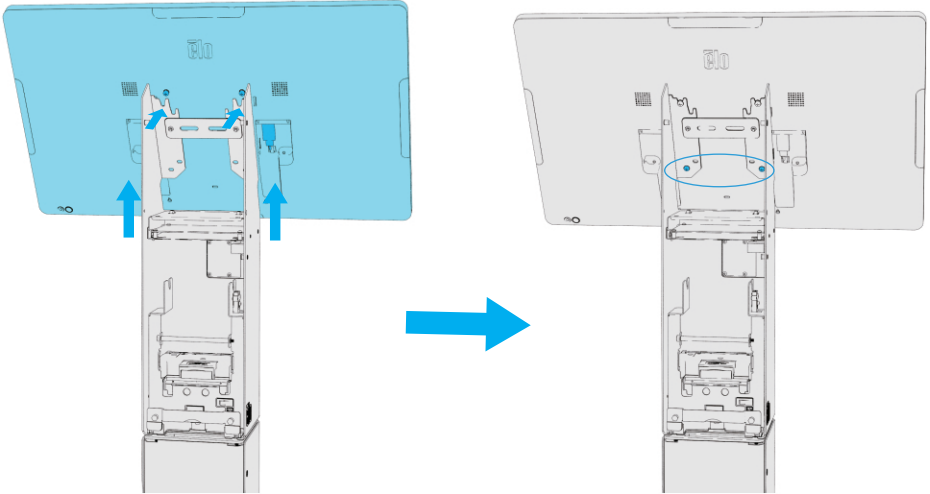
Android 15" Portrait



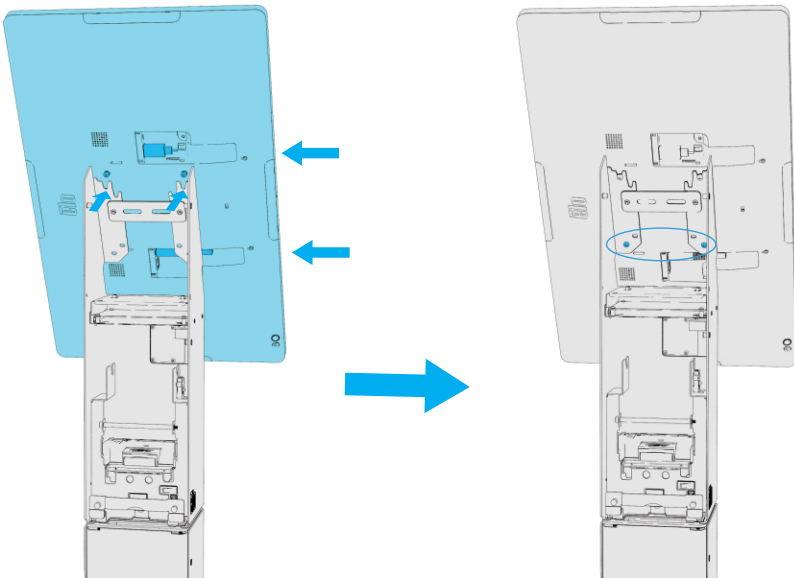
STEP 5-2:

For Android 22", connect DC cable and USB cable. Next, assemble I-Series to front cover using keyholes and attach remaining(2) screws from bag "A" to lower 100mm VESA mounting holes. Tighten upper VESA screws, VESA screws to be tightened to max 12 in-lb(1.4N-m).

Android 22" Landscape



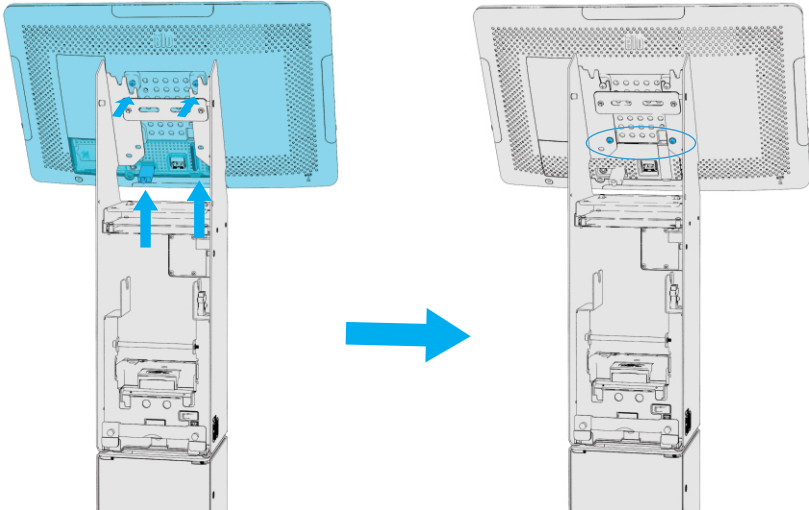
Android 22" Portrait



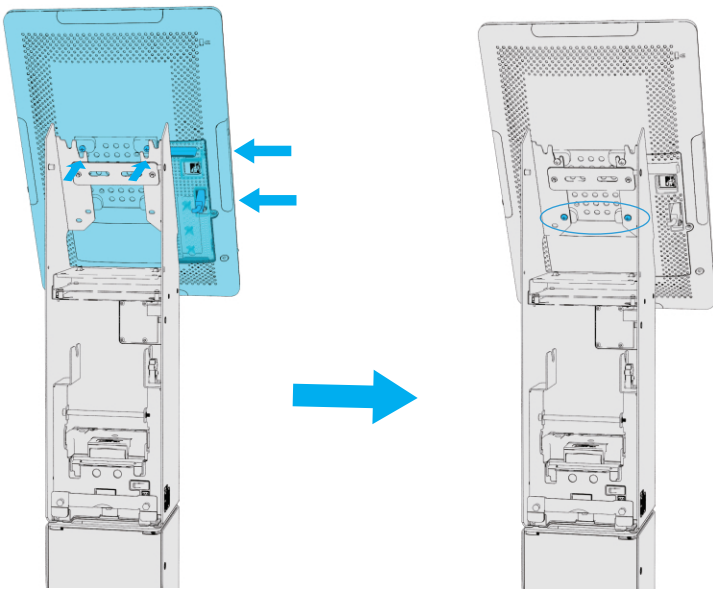
STEP 5-3:

For Windows 15", connect Type-C cable and USB cable. Next, assemble I-Series to front cover using keyholes and attach remaining (2) screws from bag "I" to lower 75mm VESA mounting holes. Tighten upper VESA screws, VESA screws to be tightened to max 12 in-lb(1.4N-m).

Windows 15" Landscape



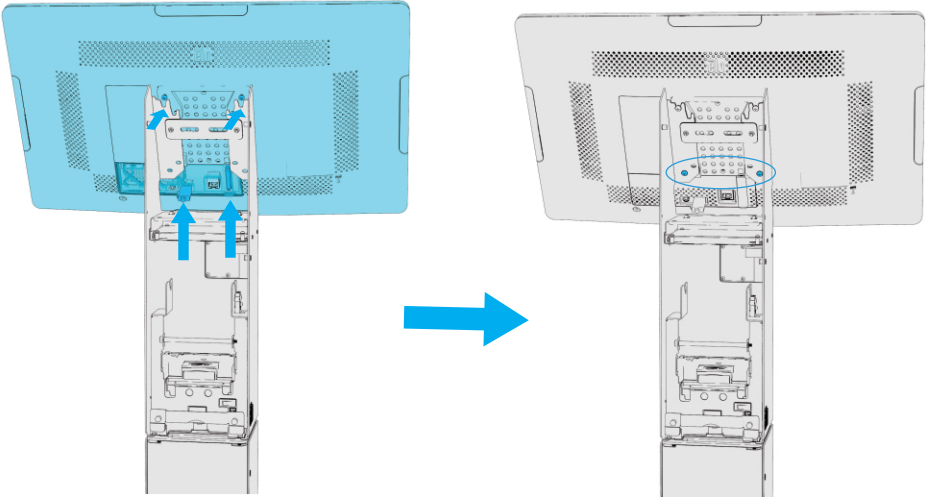
Windows 15" Portrait



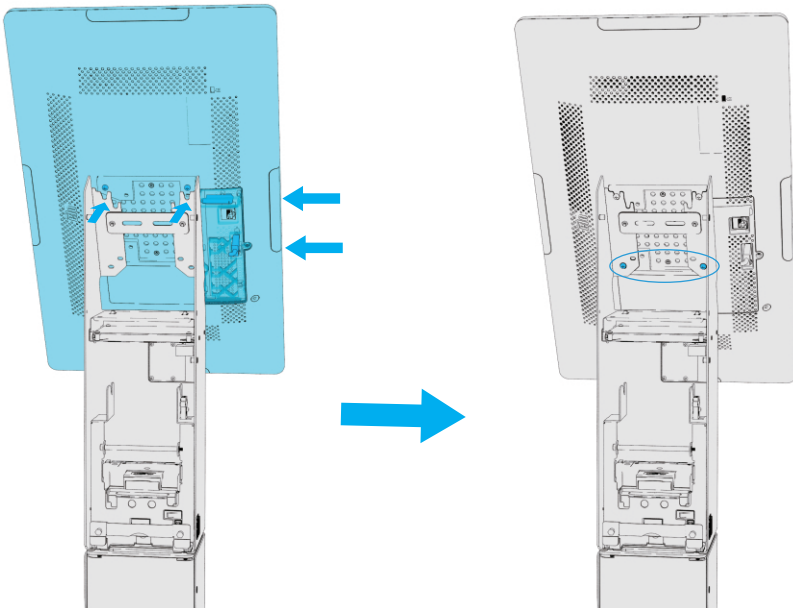
STEP 5-4:

For Windows 22", connect Type-C cable and USB cable. Next, assemble I-Series to front cover using keyholes and attach remaining(2) screws from bag "B" to lower 100mm VESA mounting holes. Tighten upper VESA screws, VESA screws to be tightened to max 12 in-lb(1.4N-m).

Windows 22" Landscape



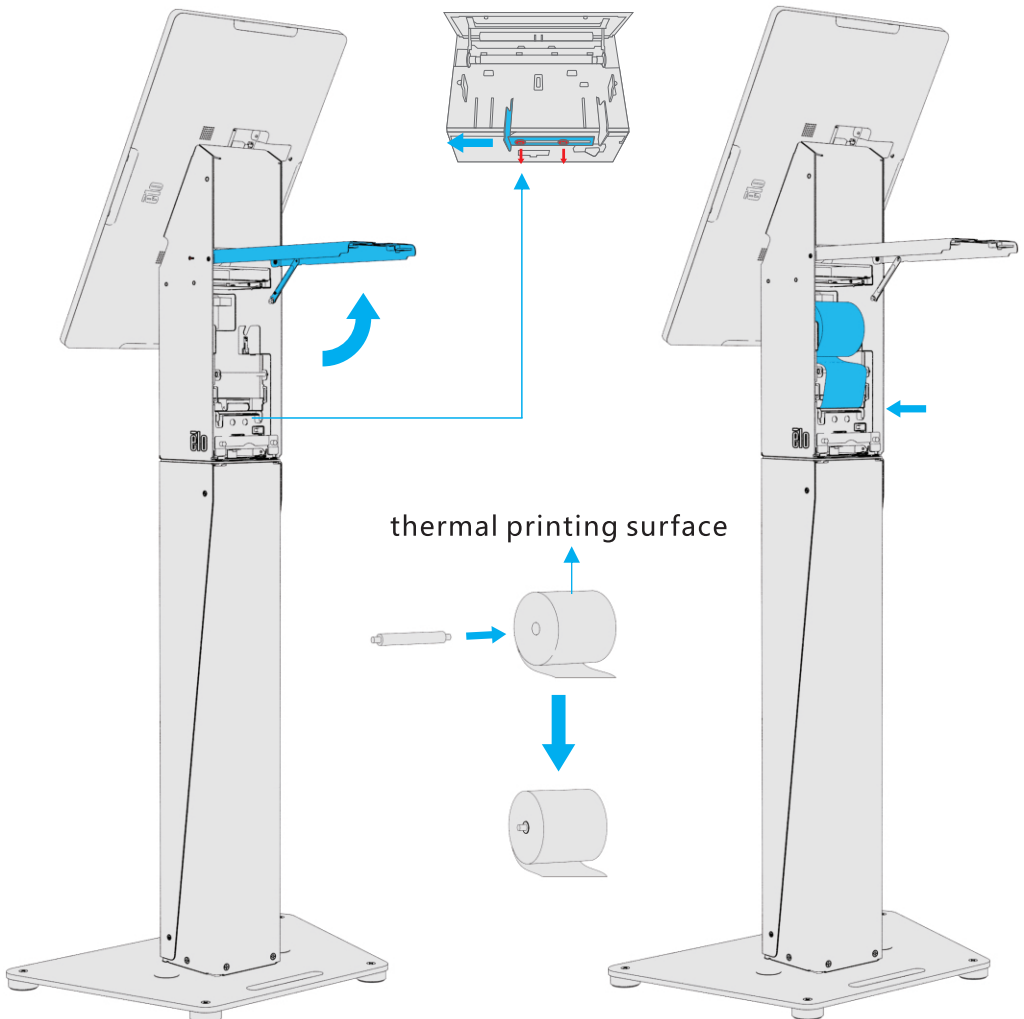
Windows 22" Portrait



STEP 6:

Installing paper and changing paper:

- 1) Open the back cover and use supporting arm to support it after rotating 90 degree.
- 2) Take paper roller from Bag "H". If the paper head is not even, use scissors to cut evenly. Insert the roller into the paper core and put the paper roller into the printing paper bracket. The paper delivery direction is inward.
- 3) Lead the paper head into the printer outlet by guiding rod. Wait for the paper out after printer is on.
- 4) Adjust the printer guiding rod to fit paper width (adjust screws first) if the width of the printing paper changes.
- 5) Test if the printer works normally. If it's normal, take off the supporting arm and close the back cover.



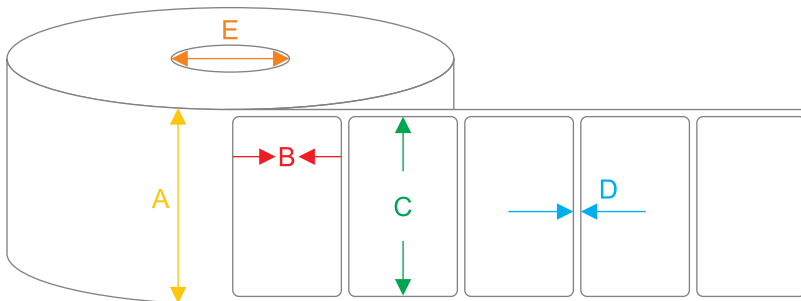
STEP 7:

Printing spec and requirements:

Printing	Printing method	Line thermal printing
	Lattice	640 dots
	Printing speed	250mm/s (Max.)
	Printing width	80mm (Max.)
	Feeding method	Automatic feeding (horizontal 180 degree)
	Cutting method	Semi-cut
Printing Paper:	Printing paper	Line thermal printing
	Paper width	640 dots
	Paper thickness	250mm/s (Max.)
	Recommended paper roll diameter	80mm (Max.)
	Recommended paper core size	Inner diameter - more than 13mm Outer diameter - less or equal to 24mm

The spec of thermal adhesive sticker roll (80mm width labels are recommended):

- Lining width: $58\text{mm} < A < 80.5\text{mm}$
- Label depth: $40\text{mm} < B$
- Label width: $56\text{mm} < C < 80.5\text{mm}$
- Label gap: $2\text{mm} < D < 5\text{mm}$



Note: The infrared property of the paper: lining luminousness more than 80%, label luminousness less than 20%.

STEP 8:

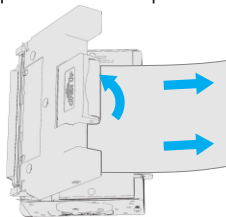
Notes and solutions to normal malfunction:

1) Note:

- Choose the proper thermal paper or thermal adhesive sticker labels. Otherwise, it will degrade printing quality and affect the life cycle of the print head, even damage the thermal printing head.
- Plug out inner signal cables of the printer in power-on condition is forbidden.
- When paper is run out or the paper cover is open, printing is not allowed. Otherwise, thermal slices are easy to be damaged.
- Use contained power adapter and avoid liquid like water spraying into the printer.

2) Solutions to normal malfunction:

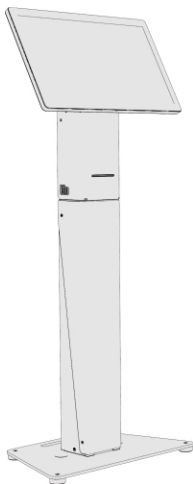
- Paper jam: Open the back cover and power off the printer. Open the printer cover shown as the picture and pull out the paper by the arrow direction.



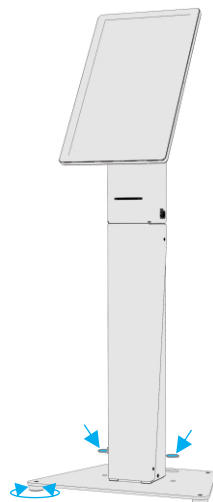
- Cutter jam: If the paper cannot be cut, open the top cover and power off the printer. Re-power on the printer after 2 seconds and the cutter will be automatically reset.

STEP 9:

Bolt holes available on top of base to secure stand to floor. Feet can be adjusted in case of uneven surfaces.



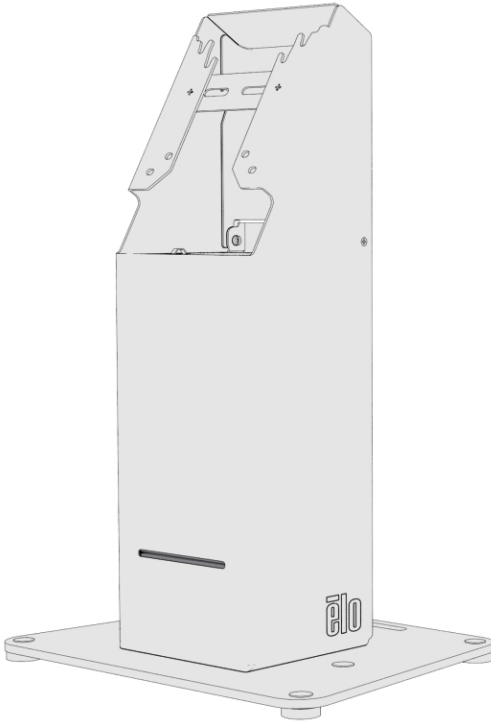
Landscape



Portrait

Printer Wallaby-Countertop

Box Contents



Countertop Assembly
Qty. 1



M4x8, PAN-HEAD, SCREW
Qty. 4, Bag A
(for Android 15.6" or 21.5")



M4x12, PAN-HEAD, SCREW
Qty. 4, Bag B
(for Windows 21.5")



M4x17, PAN-HEAD, SCREW
Qty. 4, Bag I
(for Windows 15.6")



Printing paper roller
Qty. 1, Bag H

**For Printer Wallaby-Countertop assembly and printer usage,
please refer to Step 4-Step 9 of Printer Wallaby-Floor**

Elo Technical Support

Online self-help: www.elotouch.com/support

America

800-ELO-TOUCH

Tel +1 408 597 8000

EloSales.NA@elotouch.com

Asia-Pacific

Tel +86 (21) 3329 1385

EloAsia@elotouch.com

Europe(EMEA)

Tel +32 (0)16 930 136

EMEA.Sales@elotouch.com

The information in this document is subject to change without notice. Elo Touch Solutions, Inc. and its Affiliates (collectively "Elo") makes no representations or warranties with respect to the contents herein, and specifically disclaims any implied warranties of merchantability or fitness for a particular purpose. Elo reserves the right to revise this publication and to make changes from time to time in the content hereof without obligation of Elo to notify any person of such revisions or changes.

No part of this publication may be reproduced, transmitted, transcribed, stored in a retrieval system, or translated into any language or computer language, in any form or by any means, including, but not limited to, electronic, magnetic, optical, chemical, manual, or otherwise without prior written permission of Elo Touch Solutions, Inc.

Elo and the Elo logo are either trademarks or registered trademarks of Elo Touch Solutions, Inc.

