

## Kit Contents

### Stand

M4x6 mounting screws (4)

75mm VESA mount adapter for customer facing display



## Quick Installation Guide

# Z10 POS Stand

Revision B  
P/N E185186

### Elo Technical Support

Online self-help: [www.elotouch.com/support](http://www.elotouch.com/support)

#### America

800-ELO-TOUCH  
Tel +1 408 597 8000  
[elosales.na@elotouch.com](mailto:elosales.na@elotouch.com)

#### Europe (EMEA)

Tel +32 16 930 136  
[emea.sales@elotouch.com](mailto:emea.sales@elotouch.com)

#### Asia Pacific

Tel +86 (21) 3329 1385  
[EloAsia@elotouch.com](mailto:EloAsia@elotouch.com)

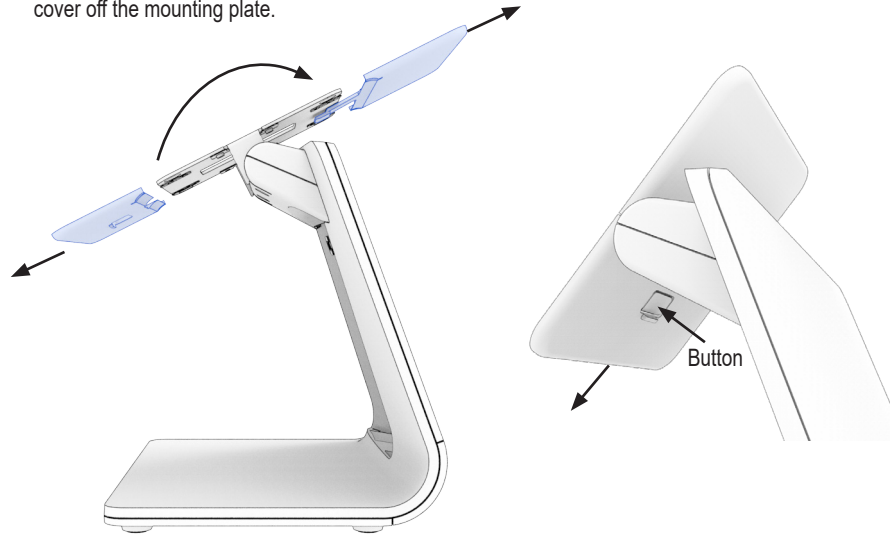
The information in this document is subject to change without notice. Elo Touch Solutions, Inc. and its Affiliates (collectively "Elo") makes no representations or warranties with respect to the contents herein, and specifically disclaims any implied warranties of merchantability or fitness for a particular purpose. Elo reserves the right to revise this publication and to make changes from time to time in the content hereof without obligation of Elo to notify any person of such revisions or changes.

No part of this publication may be reproduced, transmitted, transcribed, stored in a retrieval system, or translated into any language or computer language, in any form or by any means, including, but not limited to, electronic, magnetic, optical, chemical, manual, or otherwise without prior written permission of Elo Touch Solutions, Inc.

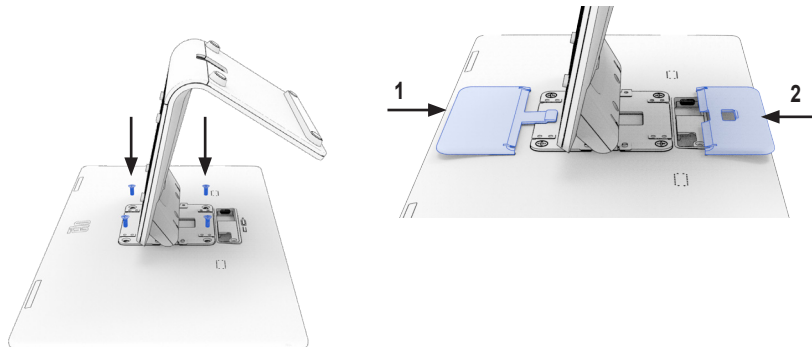
Elo and the Elo logo are either trademarks or registered trademarks of Elo Touch Solutions, Inc..



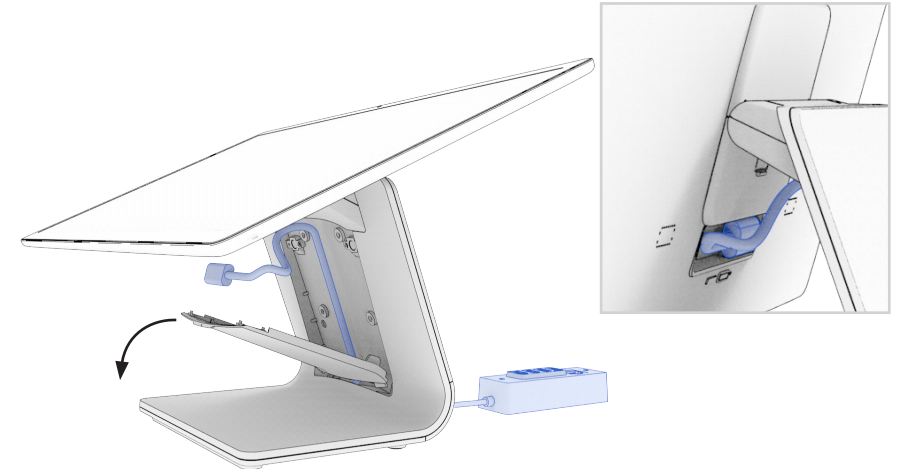
- 1** Rotate the display mounting plate back as far as it will go. Remove the lower plastic cover to expose the VESA mounting holes by pressing the button and sliding the cover down. Then slide the upper cover off the mounting plate.



- 2** Secure the I-Series 4 Slate Display to the stand by installing the M4x6 flat-head screws (4 included with stand kit) through the mounting plate and into the back of the display. Do not use longer or shorter screws. Slide the plastic top cover over the mounting plate making sure the cover sits against the rear of the display. Then slide the lower cover up until the button snaps in place.



- 3** Remove the cable cover door and route the USB-C cable from the I-Series 4 Slate Display under the stand opening and connect to the USB-C port on the rear of the display. Replace the cable cover door.



- 4** Secure the USB-C cable on the back of the I-Series 4 Slate Display with the cable security bracket.



Cable Security Bracket

Cable Security Bracket screw