

## What's Included



## Other Accessories

Computer Module - 4x M6x50 screws, 4x M8x50 screws, 4x Spacers | Stylus Tray - 2x thumb screws | Conference Camera - 2x thumb screws | Elo Hub - Reference Guide, Receiver Board with 4x screws, 2x Docking tray covers with 3x screws, 5 meter CAT6 Cable, 1x HDMI Cable, 1x USB C Cable & Type C to A adapter, 2x Cable Locking Bracket with 2x Screws

## What's Needed

Compatible Elo display, wall mount or stand with 600x600 or 400x400 VESA, short Phillips head screwdriver

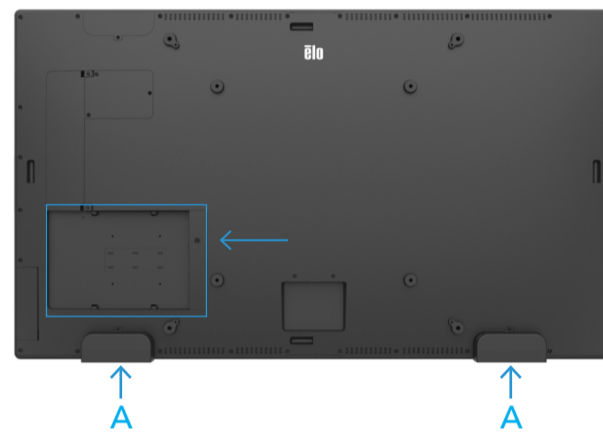


## Hardware Installation Steps

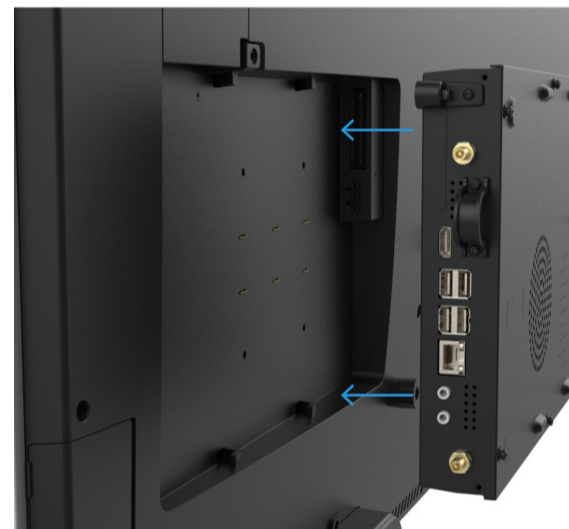
**Note:** Read entire guide before beginning installation in order to plan out mounting location, cable routing, and hub placement. Elo offers recommendations on how to plan display mounting, cable routing, camera location, and conference table positioning in the Elo Collaboration Solution Guide available online at [www.elotouch.com](http://www.elotouch.com). Scan QR code to view website.

### 1. Install Elo Computer Module (ECM)

- Unpack display and carefully lay face down on table. (Do not lift by the speakers or rest the display on the speakers.)
- Unscrew and remove the (ECM) docking tray cover on back of display.



- Unpack ECM from Conference Kit box. (Be sure to save the two license cards included.)
- Place the ECM over the guides on the rear of display and slide ECM back to seat the connector.

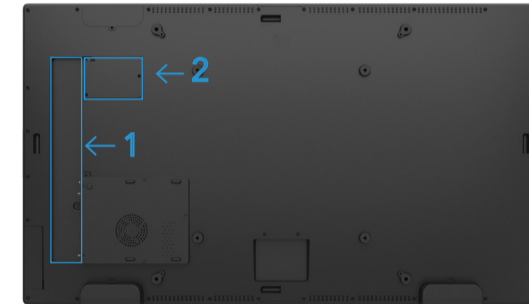


- Tighten the security screw on the front of the ECM.



### 2. Install Elo Hub Receiver Board

- Remove IDS cable cover (1) and then remove the three screws from the receiver board blank cover (2) from the back of the display and discard the cover. (Save the three screws for use in step 2D).

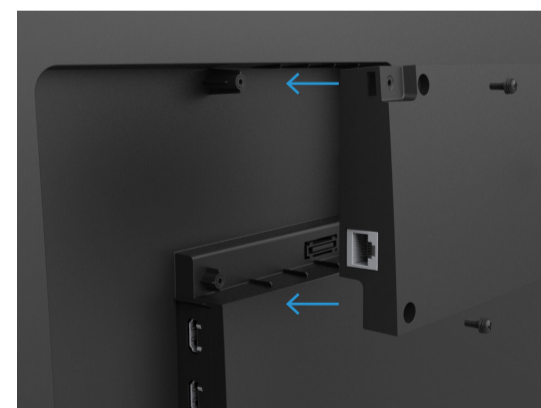


- Unpack Receiver Board, new 5553 and 6553 Receiver Board covers and screws from Conference Kit box.

- Select a new receiver board cover for either 5553L or 6553L display and mount Receiver Board to it with screws provided. Use the cover marked "55" for the 5553L and the cover marked "65" for the 6553L.



- Connect the Receiver board (with cover attached) to the docking connector on display. Secure the Receiver board cover with the three screws.

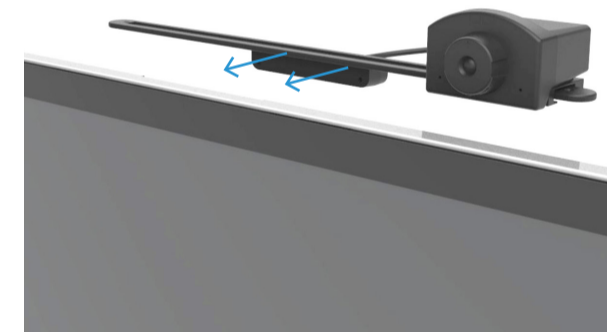


### 3. Install Conference Camera

- Unpack Conference Camera from Conference Kit box.
- Choose one mounting location - top, bottom, or either side. **NOTE:** If mounting camera on bottom of display, install camera after wall-mounting. Also note stylus tray cannot be used in this configuration.
- Remove the Elo Edge Connect™ port cover from chosen location.

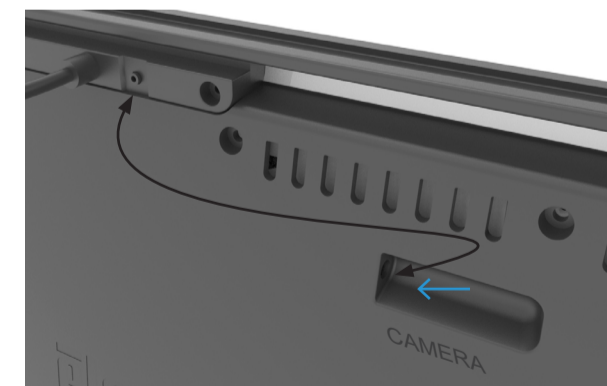


- Plug the conference camera into the Elo Edge Connect port. Ensure the USB connector on the camera aligns with the connector on the IDS display. **NOTE:** The camera protrudes in front of the display and will interfere with anything that's under the display during installation. You may choose to slide the display so the camera hangs just over the edge of the table or add a pad under the display to prevent this interference during installation.

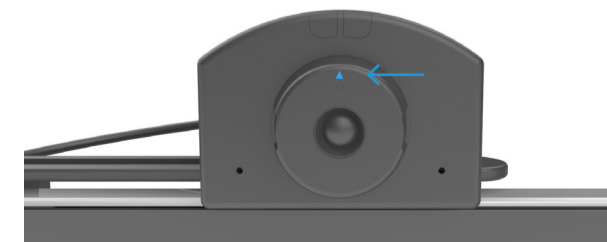


- Secure the camera to the display by inserting and tightening the long thumbscrews on both sides.

- Connect the 2.5mm barrel jack cable between the camera and the nearest connection labeled "CAMERA" on the back of the IDS display.

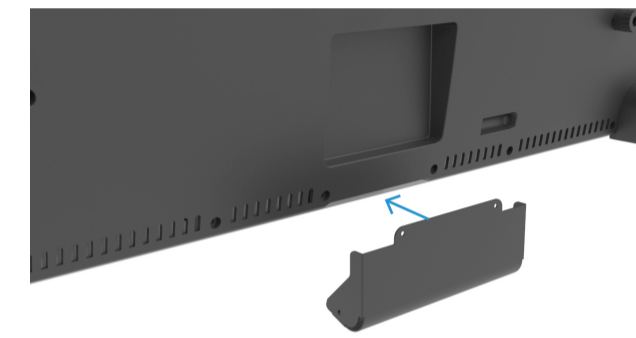


- Ensure the image sensor is orientated so the arrow points in the upward direction by rotating clockwise or counterclockwise as needed. (For bottom mounting, the arrow must point down)



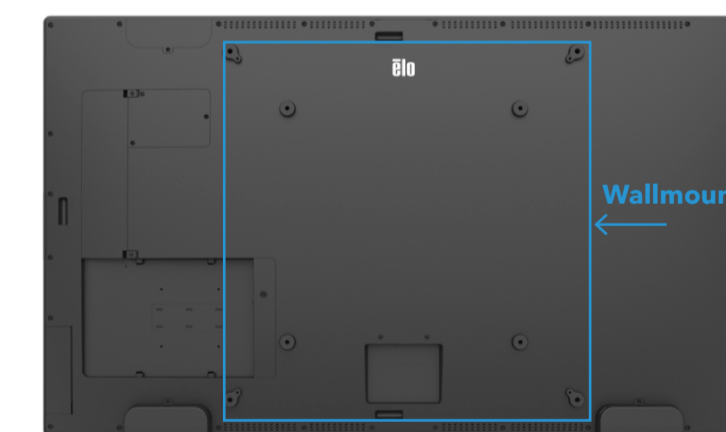
### 4. Install Stylus Tray

- Unpack stylus tray from Conference Kit box.
- Remove bottom Elo Edge Connect™ port cover.
- Secure the stylus tray to the display by inserting and tightening the stylus tray thumb screws on both sides of the bracket.
- Place stylus for use into tray. (Use active stylus for PCAP displays and passive stylus for IR displays.)



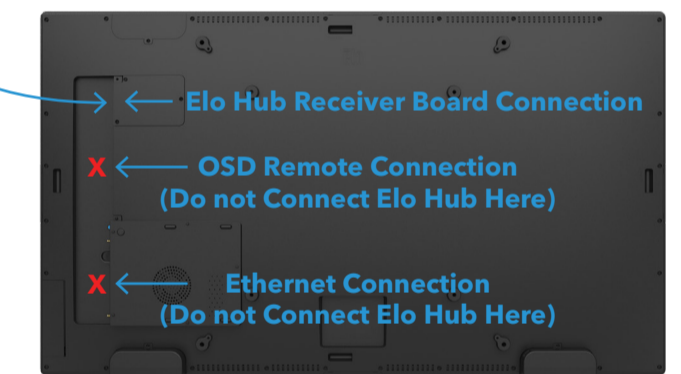
### 5. Mount Interactive Display

- Mount display to the wall using Elo low-profile wall mount or third-party wall mount following instructions provided with mount. (Some third-party mounting systems may require 15 mm spacers and longer mounting screws (M6x50mm or M8x50mm) included in huddle kit to avoid interference with the ECM.)



### 6. Install Elo Hub™

- Unpack conference hub and accessories from Conference Kit box. **NOTE:** A single CAT6 cable is provided for direct hub connection to display. Additional CAT6 interconnect hardware may be added as required (see Elo Hub User Manual for examples). Total length of cable routing should not exceed 35 meters.
- Connect one side of the CAT6 cable to the Elo Hub Receiver board on the Display.
- Route the CAT6 cable to the Elo Hub placed on table and connect.
- Connect supplied HDMI and USB-C cables to the Elo Hub and attach locking brackets with screws to secure the cables to the Elo Hub. Cables are used for device connection.

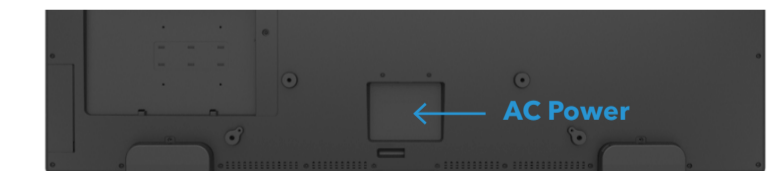


### 7. Connect Cables and Power On the System

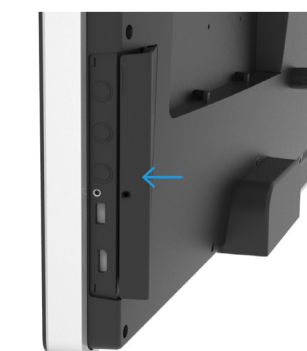
- Connect an ethernet cable to the ECM for internet (Recommended). For wireless connection, install WiFi antennas on the ECM.



- Connect AC power cable found in Elo display accessory box.



- Open the side cover on the display and power on the system.



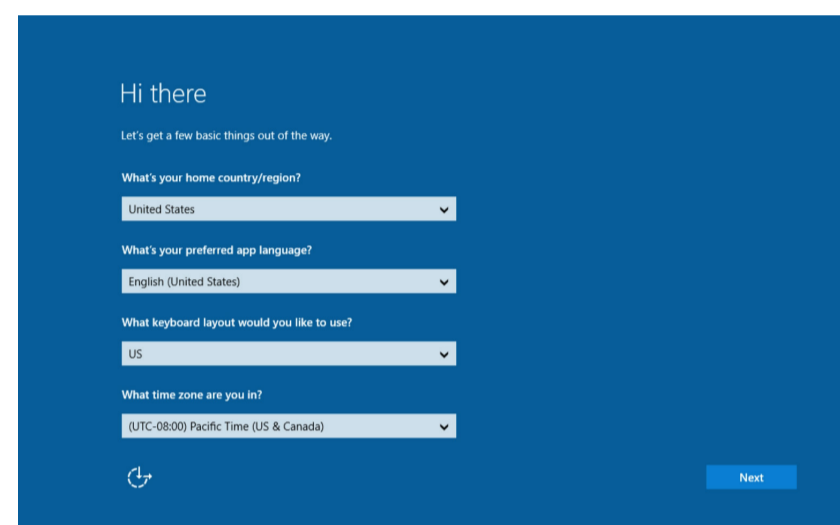
## Software Installation Steps

### 1. Setup Display and ECM

A. Follow on screen instructions to select OSD language & setup time / time zone.

B. Follow on screen Windows instructions to complete Windows setup. This can be done with the onscreen touch keyboard or with USB connected keyboard/mouse via the USB port on the side of the display.

Note: Computer must be connected to the internet to register software.



### 2. Install Meeting Software

For example: Installing Microsoft Teams

A. Open a browser and go to <https://teams.microsoft.com/downloads>

B. Download and open the Teams installer application.

C. Follow the instructions for installing Microsoft Teams.

D. If you are installing another web conferencing application such as Zoom or Cisco Webex, download and follow the instructions to install that application.

E. Designate the Elo hardware as your sources:

- i. Speaker = Echo Canceling Speakerphone
- ii. Microphone = Elo Hub Speakerphone
- iii. Camera = Elo Conference Camera

Download Teams for your desktop



Download Teams

Get the Teams mobile app



Enter phone number or email address for a link.

Send now

How your phone number or email address is used.

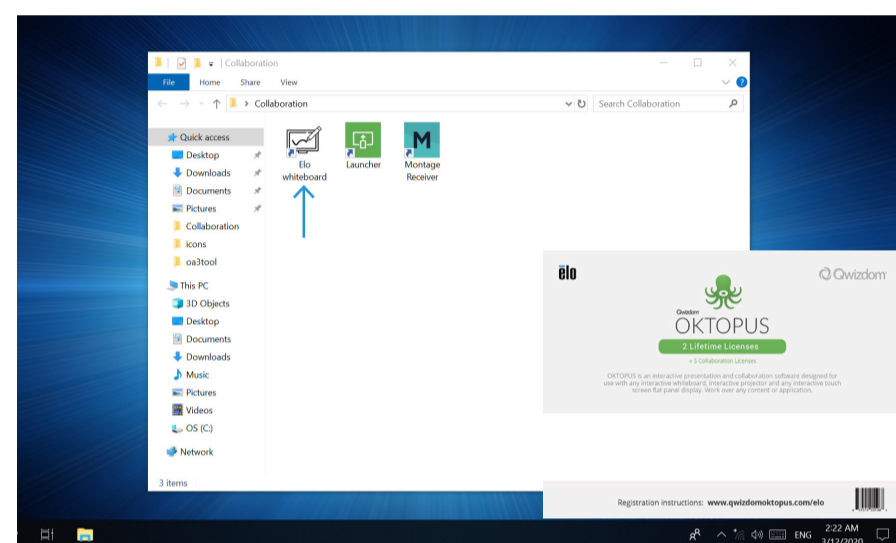
### 3. Register Qwizdom Oktopus License (Whiteboard software)

A. Open Elo Whiteboard application found in the Collaboration folder on the desktop.

B. Follow on screen instructions.

C. Use license card saved from huddle kit box.

D. Oktopus user guide can be found at <https://qwizdomoktopus.com/user-guide>



### 4. Register DisplayNote Montage and Launcher Licenses (Wireless Presentation and Meeting App Organizer)

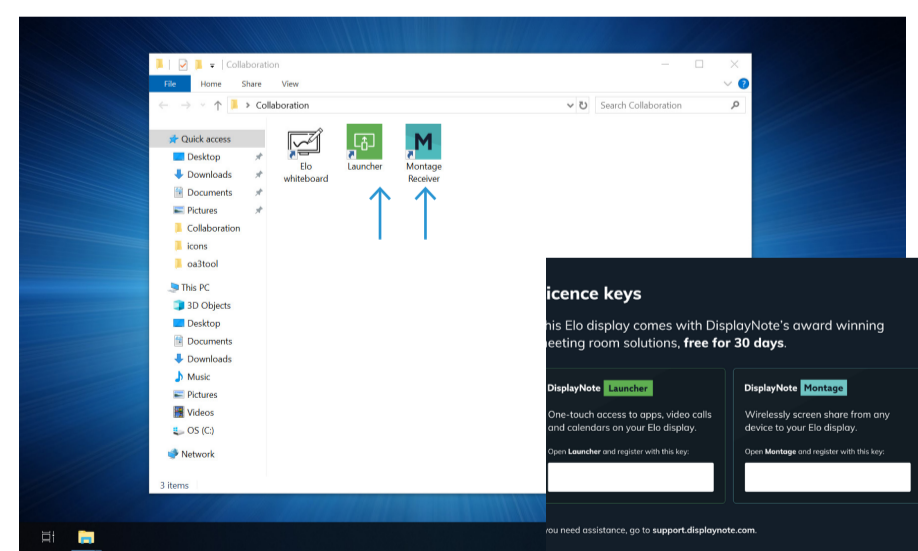
A. Open the DisplayNote applications found in the Collaboration folder on the desktop.

B. Follow on screen instructions.

C. Use license card saved from huddle kit box.

D. Setup Launcher to include desired applications with instruction found at <https://www.displaynote.com/solutions/launcher>

E. Montage information can be found at <https://www.displaynote.com/solutions/montage>



### 5. Complete Conference Camera Setup

A. Start your meeting software and enable the camera in the meeting software.

B. The green activity indicator will illuminate any time the webcam is in use.

C. If top or bottom mounted, slide the camera left/right and tilt as needed for desired viewing area.

D. If side mounted, slide the camera up/down and tilt it to center as needed for desired viewing area.



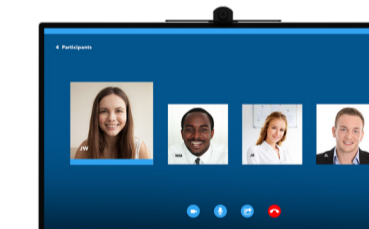
### 6. Elo Hub Setup

A. Please make sure your meeting software is open to enable all functionality of the Elo Hub.

B. Use the buttons on top of the Elo Hub to start, stop, and mute the meeting

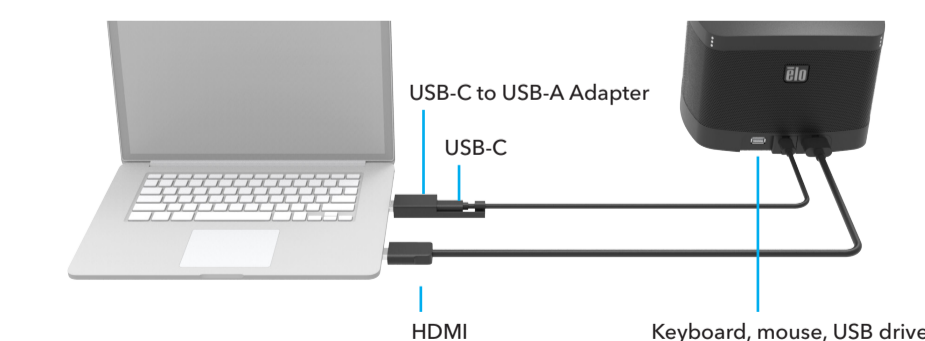
#### Control Meeting Hosted on Elo Display (Default)

- Start a pre-scheduled meeting.
- Accept or hold call.
- End the meeting or call.



Optional: To share content from your device to the meeting, connect via HDMI, USB-C, or wirelessly via AirServer.

#### Control Meeting Hosted on Laptop



1. Connect laptop via USB-C or with HDMI + USB-A as shown with provided adapter.
2. Press button. Your laptop is now controlling the Elo Display.
3. The display, hub audio, and camera are now available to your laptop as peripherals.