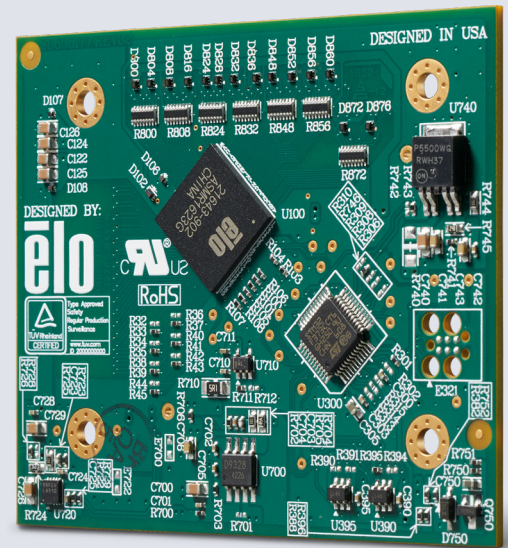




TouchPro® PCAP 9200 Series Controller

7" to 22" Advanced Touch Solution



Multi-Touch Controller



Supports 7" to 22"
Touch Solutions



Advanced Industrial/
Commercial Features

Product Overview

The Elo TouchPro 9200 series touch controllers paired with Elo's Pro-F or Pro-G PCAP sensors offers an advanced capability touch solution designed specifically for commercial and industrial applications. This family of controllers supports both glass and film sensors and can be used in challenging industrial environments with high levels of liquid contamination (including salt water), high levels of electro magnetic interference or with very thick cover glass. Elo offers a complete PCAP solution including touch screen, controller, drivers for various operating systems and software utilities which result in shorter development and integration time. The available integration guide provides recommendations to simplify integration and avoid typical issues such as EMI from the power supply or LCD screen. Elo also offers a wide range of customization options to meet your requirements including cover glass specifications and finishes along with colors and logos. Contact an Elo sales representative for more details.

Elo TouchPro PCAP 9200 Series Controllers*

Touchscreen Support	
Size Range	7" to 22"
Construction	Glass or Glass/Film
Cover glass thickness	to 9mm

Touch Performance	
Input Methods	Finger, gloved hand, or passive stylus
Number of Touches	12
Response Time	25ms (15ms)
Report Rate	Up to 200Hz
Positional Accuracy	+/-2.0mm
Resolution	4096 x 4096

Electrical	
Communication Interface(s)	USB or Serial

Environmental	
Operating Temperature	-20C to +70C
Humidity	90% RH (non-condensing)
Safety Approvals	UL/CE

Software	
Operating Systems	Windows, Linux, Android, Mac OS
Driver Features	Multiple monitors, various touch modes, touch zones

*Actual technical specifications depend on multiple design variables including touch IC, tuning parameters and screen size. Values below are for reference only.

To find out more about our extensive range of Elo touch solutions, go to elotouch.com, or call the office nearest you.

North America

Tel +1 408 597 8000
Fax +1 408 597 8050
elosales.na@elotouch.com

Europe

Tel +32 (0)16 70 45 00
Fax +32 (0)16 70 45 49
elosales@elotouch.com

Asia-Pacific

Tel +86 (21) 3329 1385
Fax +86 (21) 3329 1400
www.elotouch.com.cn

Latin America

Tel +52 55 2281 6958
www.elotouch.com

Elo reserves the right to change or update, without notice, any information contained herein; to change, without notice, the design, construction, materials, processing or specifications of any products; and to discontinue or limit production or distribution of any products. Elo and the Elo logo are either trademarks or registered trademarks of Elo Touch Solutions, Inc. All other trademarks are the property of their respective owners. © 2018 Elo Touch Solutions, Inc. All rights reserved. 18052AES00112

