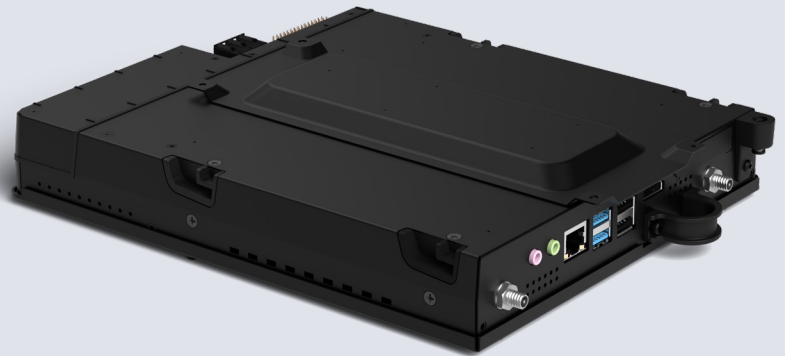




ECMG4

Computer Modules for Touchscreen Signage



Integrates touch computing & Digital Signage



Commercial Grade



3-Year Warranty

Product Overview

The Elo Computer Modules (ECM) feature the Intel® Core™ 7th Generation CPUs and enhanced graphics engine. Offered with Intel i5 processors for Microsoft Windows® 10 or no operating system. The ECMs can also help enable customer engagement and immersive brand experiences by adding a new exciting dimension to traditional broadcast digital signage - the power of touch. Using Elo's computer modules instead of a separate external device can reduce complexity, provide added reliability, minimize mounting profile and reduce installation/maintenance costs.

Centralized management and security capabilities of Microsoft Windows ensures compatibility with many content management servers and web-based consoles for seamless connection with the internet, digital marketing, interactive whiteboard, building directory, virtual receptionist, and point-of-information (POI) applications. The ECM can also support optimal partitioning of locally cached and network stored content, allowing developers to monitor and deploy content via device-to-device or web connections.

ECMG4 available with Intel® Core™ 7th Generation CPUs and enhanced graphics engine - ideal for engagement and interactive experiences

Open and configurable platform ideal for pairing with a bring-your-own-device content sharing software to offer employees and corporations countless business benefits

No external cables required - AC power, video and USB signals pass between the computer module and the Elo IDS display via an internal docking connector

ECMG4 Computer Modules for Touchscreen Signage

Specifications	
Processor	Intel® Core™ i5-7500T Processor (6M Cache, up to 3.30 GHz) 6 MB Intel Smart Cache 8 GT/s Direct Media Interface 3 (DMI3)
Chipset	Intel® H110 Chipset
Video	Intel HD Graphics 630
TDP	35W
BIOS	AMI
Storage	256GB m.2 Solid State Drive (SSD) GB equals one billion bytes when referring to storage capacity. Accessible capacity may be less.
Memory	8 GB DDR4-2400 MHz SO-DIMM on 1 of 2 slots (Expandable to 64 GB maximum on 2 slots) Maximum memory using 2 slots. Expandable up to 64GB maximum, DDR4-2133/2400, DDR3L-1333/1600 @ 1.35V.
Operating Systems Supported	No Operating System Microsoft Windows 10 64-bit (CBB) Microsoft Windows 10 Enterprise 2019 LTSC 64-bit Microsoft Windows 10 Enterprise 2019 LTSC 64-bit (Montage)
Display Compatibility	6553L (IR & PCAP)
USB Port(s)	2 x USB 2.0 Type A; 2 x USB 3.0 Type A
Ethernet Port(s)	1 x LAN RJ45 (Gigabit)
Wireless	IEEE 802.11 a/b/g/n/ac (downlink MU-MIMO)
Bluetooth	Bluetooth 5
Audio Ports	1 x 3.5 mm Line out; 1 x 3.5 mm MIC in
Video Out	1 x HDMI (UHD capable)
Real Time Clock	Replaceable lithium-ion battery for clock
Power Supply	Power provided by IDS Monitor
Dimensions	11.07" x 8.2" x 1.7" / 281.1 mm x 208.2 mm x 43 mm 28.74" x 20.47" x 13.78" / 730 mm x 520 mm x 350 mm
Weight	Unpackaged: 4.6 lbs / 2.1 kg; Packaged: 7.3 lbs / 3.3 kg
Shipping Box Dimensions	Power Module + Computer Module: 28.74" x 20.47" x 13.78" / 730 mm x 520 mm x 350 mm
Temperature	Operating: 0°C to 40°C (32°F to 104°F); Storage: -30°C to 60°C (-22°F to 140°F)
Humidity (non-condensing)	Operating: 20% to 80%; Storage: 10% to 90%
Agency Approvals	UL/cUL, CB, FCC, CE, AS, NZS, VCCI
Warranty	Three years
Extended Warranty	E896120 - 4 Year Warranty Coverage E896322 - 5 Year Warranty Coverage E896699 - 3 Year Warranty Coverage + AUR E896903 - 4 Year Warranty Coverage + AUR E897104 - 5 Year Warranty Coverage + AUR
Optional Product Coverage	On Site Exchange included in Continental US only
MTBF	50,000 hours demonstrated
What's in the box	QIG, 2x WiFi/BT Antenna, 4x M6x50 screws, 4x M8x50 screws, 4x Spacers

Ordering Information

Part Numbers	Description	OS
E227895	ELO-KIT-ECMG4-i5-NO	No OS
E228087	ELO-KIT-ECMG4-i5-WIN10E	Win10 (LTSC)
E725044	ELO-KIT-ECMG4-i5-W10C	Win10 (CBB)
E898841	ELO-KIT-ECMG4-i5-W10-MONTAGE	Win10 (LTSC)

To find out more about our extensive range of Elo touch solutions, go to elotouch.com, or call the office nearest you.

North America

Tel +1 408 597 8000
Fax +1 408 597 8050
elosales.na@elotouch.com

Europe

Tel +32 (0)16 70 45 00
Fax +32 (0)16 70 45 49
EMEA.Sales@elotouch.com

Asia-Pacific

Tel +86 (21) 3329 1385
Fax +86 (21) 3329 1400
www.elotouch.com.cn

Latin America

Tel +52 55 2281 6958
elosales.latam@elotouch.com

Elo reserves the right to change or update, without notice, any information contained herein; to change, without notice, the design, construction, materials, processing or specifications of any products; and to discontinue or limit production or distribution of any products. Elo and the Elo logo are either trademarks or registered trademarks of Elo Touch Solutions, Inc. All other trademarks are the property of their respective owners.

© 2019 Elo Touch Solutions, Inc. All rights reserved. 19064AES00126

